



# Fabric and TDM Services

## Deployment Overview



# Multiple Management Options

From fully managed, Self-managed, and Hybrid,  
on GCP/AWS/Azure Cloud Providers and On-premises



## SaaS Managed on K2cloud

K2view Fabric and TDM Services are hosted and managed for a customer by K2view.

A customer's environment and data is fully segregated and secured.

Dedicated connectivity to customer-hosted and managed data sources and targets.



## Self-Managed Cloud/On-prem

K2view Fabric and TDM Services are hosted and managed by a customer within a customer-owned environment in the Cloud or on-premises.



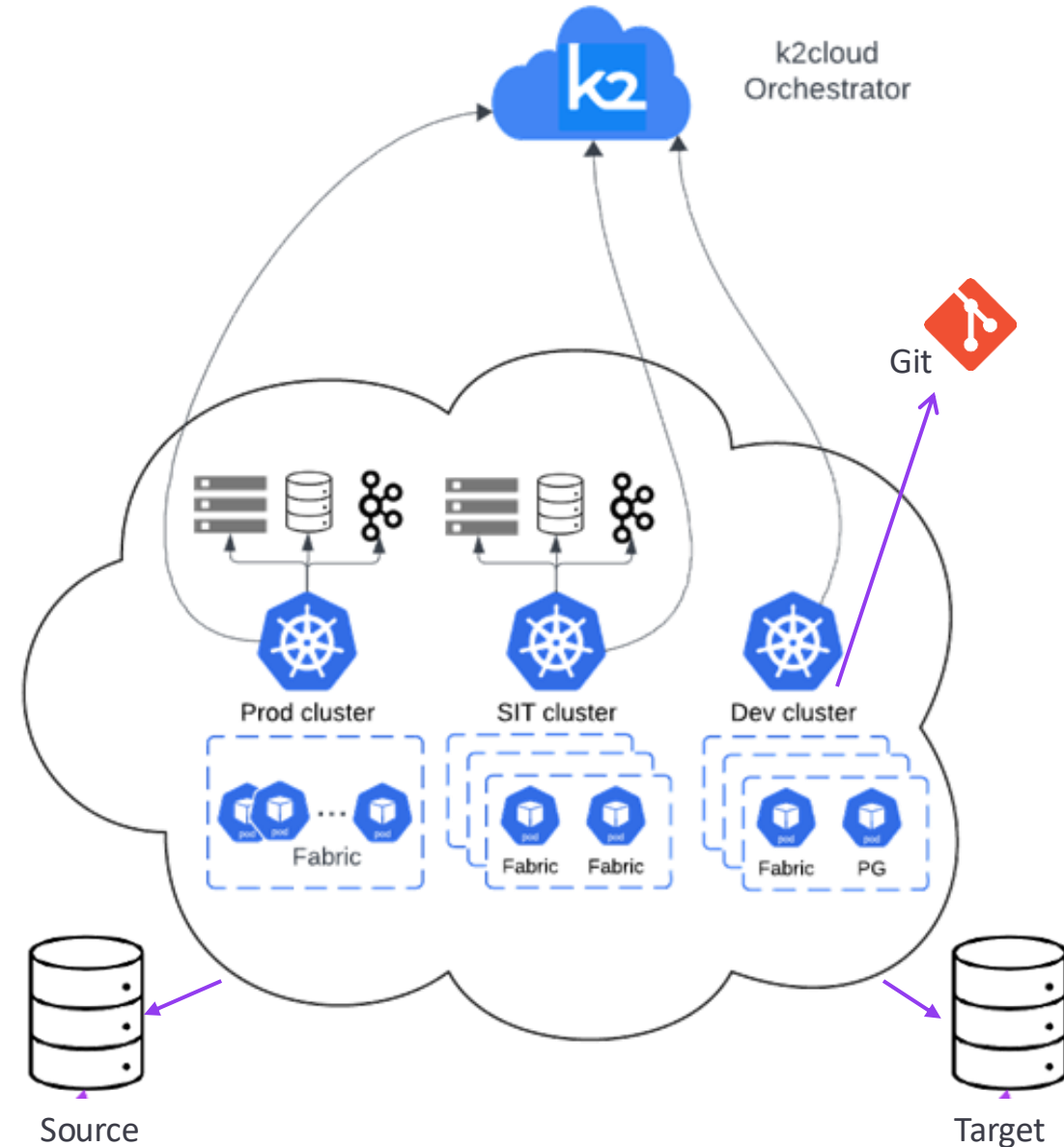
## Hybrid Cloud/On-prem

Distribute K2view Fabric and TDM Services across Cloud and on-premises environments.

Choose when and how data moves from an on-premises environment to the Cloud.

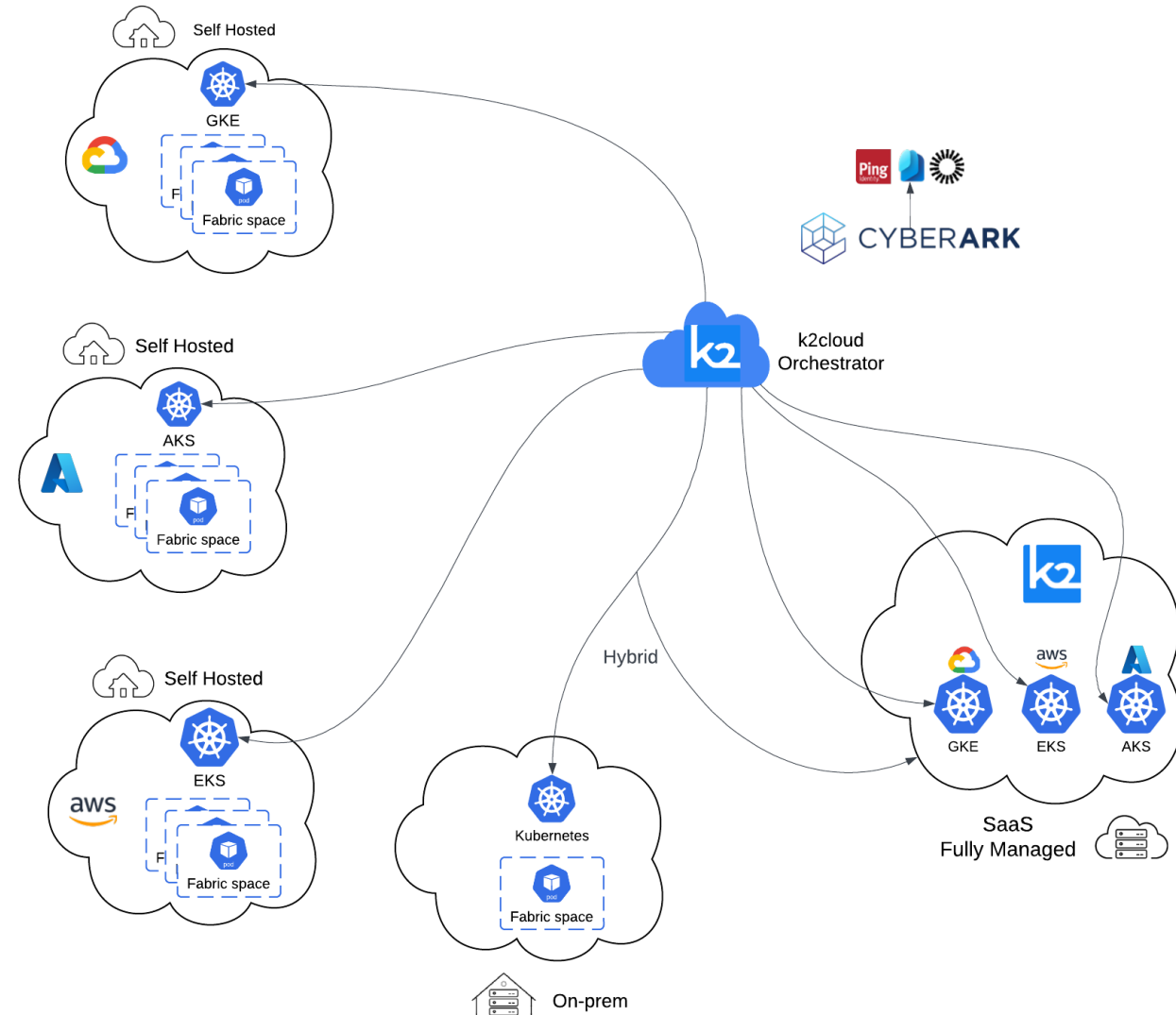
# K2cloud Components

- **K2cloud Orchestration Platform:** Creates, controls, and monitors Fabric and TDM.
  - Manages projects, sites, and spaces
  - Instructs K8s how to create spaces
  - Simple to use UI for provisioning Fabric and TDM on a Kubernetes cluster in the Cloud or on-premises
- **Kubernetes (K8s) Cluster:** where K2cloud spaces are deployed for development, integration testing, or production
- **Clusters:**
  - Studio for development
  - Production Fabric / TDM Application
  - Integration Testing / Staging – a best practice
- **Git:** used for development, build, and deployment to target environments



# K2cloud Deployment Options

- K2cloud offers full-managed SaaS, self-managed/hosted, or hybrid deployment options.
- Available on GCP, AWS, and Azure or on-premises.
- K2view offers a uniform approach to deployment, infrastructure, behavior, and service lifecycle.
- Whether deployed on the Cloud or on-premises, services function identically.



# K2view Fabric and TDM Deployment Options

## On-Prem/Cloud

### Self-Hosted and Managed Deployment

Environments:	Dev	SIT / Staging	Prod
Studio for Devs:	Docker Compose / Podman		
Fabric Services:		VM	VM
Offers and Requires:	<b>Customer-managed</b> provisioning, installation, upgrades, SSO, and monitoring of Docker Compose or Podman, and VM resources <b>Requires:</b> <ul style="list-style-type: none"> <li>Integration with data sources and targets</li> </ul>		

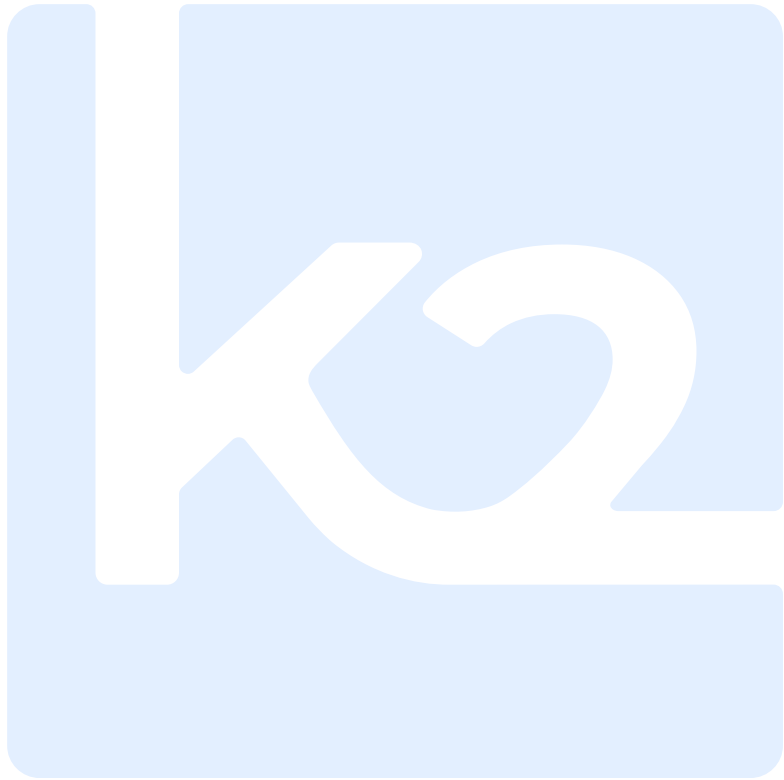
### Cloud-Managed K2cloud Kubernetes (K8s) Deployments

Environments:	Dev	SIT / Staging	Prod
Studio for Devs:	K8s		
Fabric Services:		K8s	K8s
Offers and Requires:	<b>Customer-managed</b> provisioning and installation of On-prem/Cloud K8s environments, upgrades, and SSO config <b>K2cloud Orchestrator:</b> automated deployment/creation of On-prem/Cloud K8s environments, upgrades, identity federation/SSO, and monitoring <b>Requires:</b> <ul style="list-style-type: none"> <li>(Cloud Manager only) Access to cloud.k2view.com</li> <li>Customer-managed Git source control</li> <li>Integration with data sources and targets</li> </ul>		

## K2cloud SaaS – a K2view Managed Service

### K2view Managed SaaS

Environments:	Dev	SIT / Staging	Prod
Studio for Devs:	Serverless K8s		
Fabric Services:		Serverless K8s	Serverless K8s
Offers and Requires:	<b>K2cloud Orchestrator and Serverless Services</b> <ul style="list-style-type: none"> <li>K2view-managed and provisioned environments</li> <li>K2view-managed automation, upgrades, identity federation/SSO, and monitoring</li> </ul> <b>Requires:</b> <ul style="list-style-type: none"> <li>Access to cloud.k2view.com</li> <li>Customer-managed Git source control</li> <li>Customer-managed integration with data sources and targets</li> </ul>		

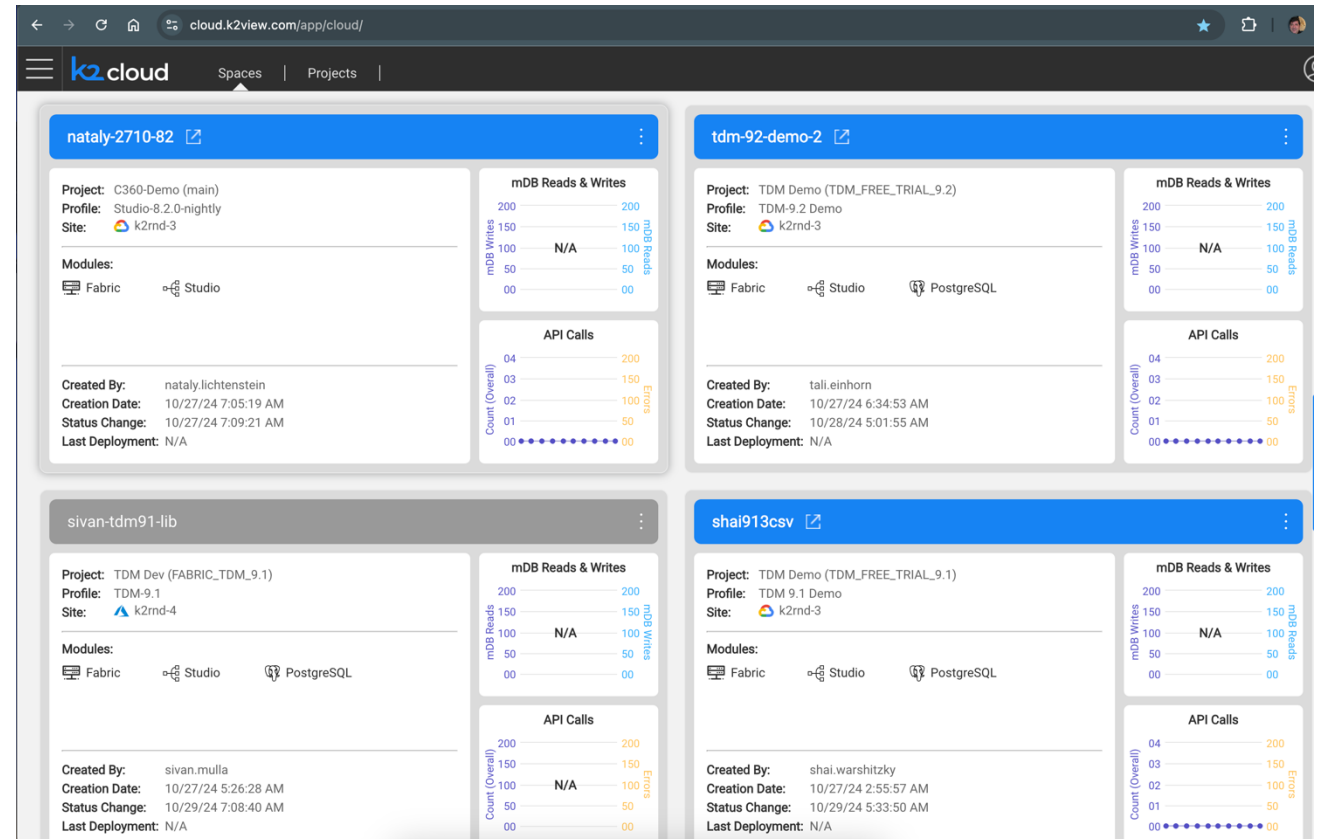
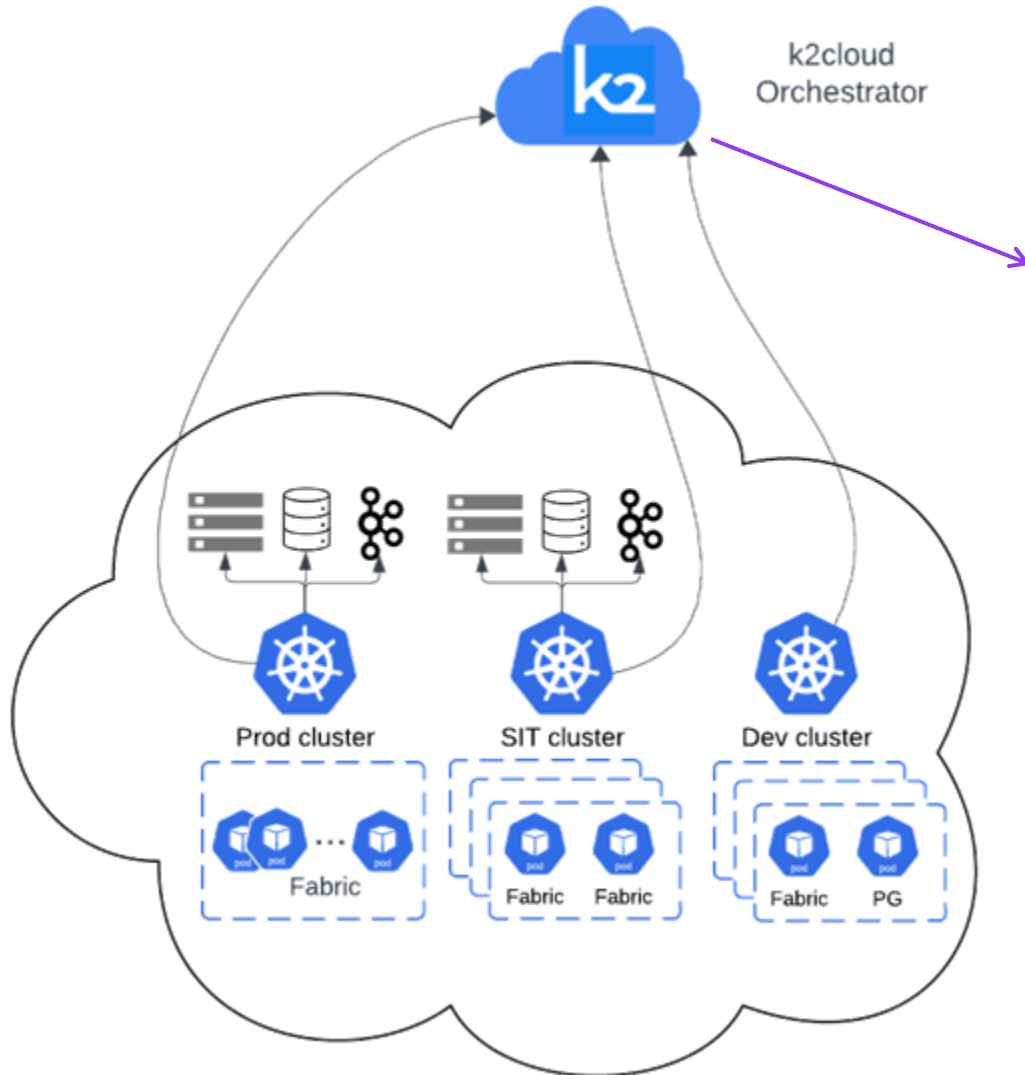


**k2view**

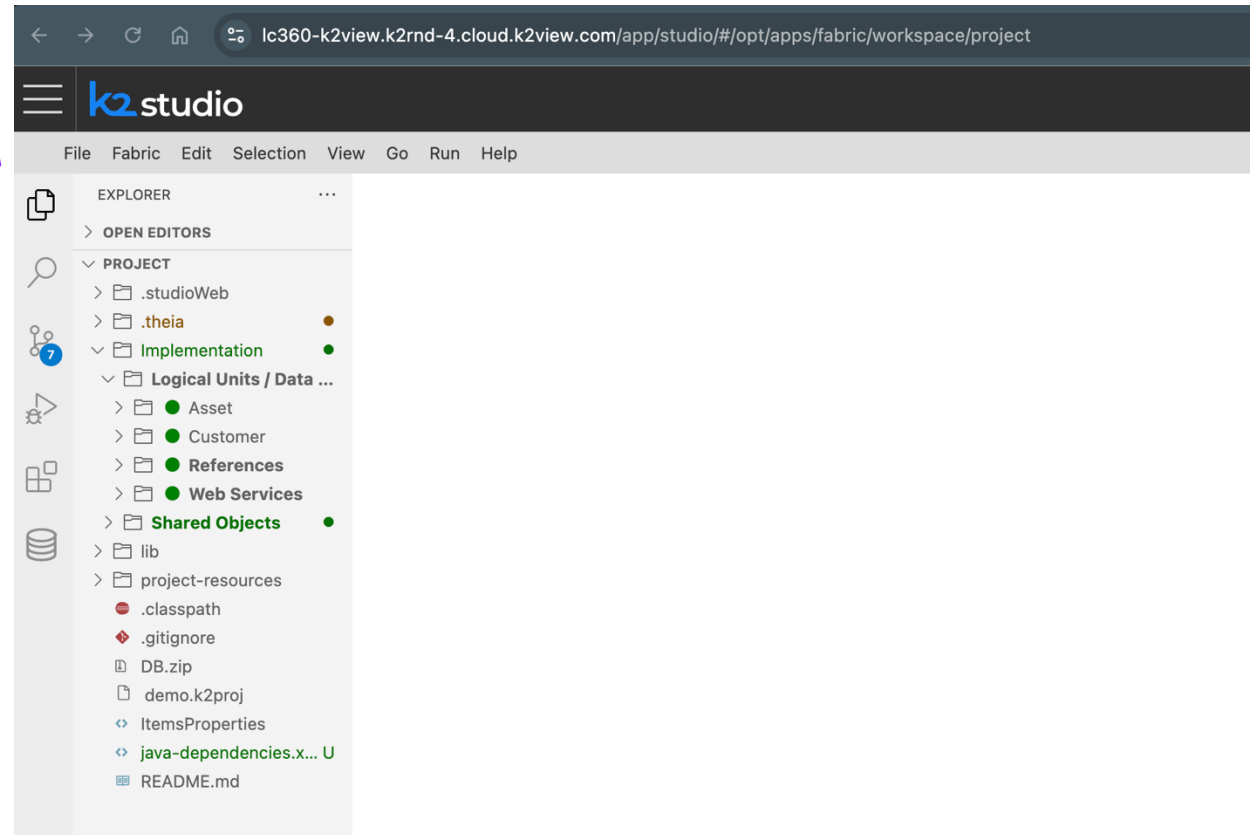
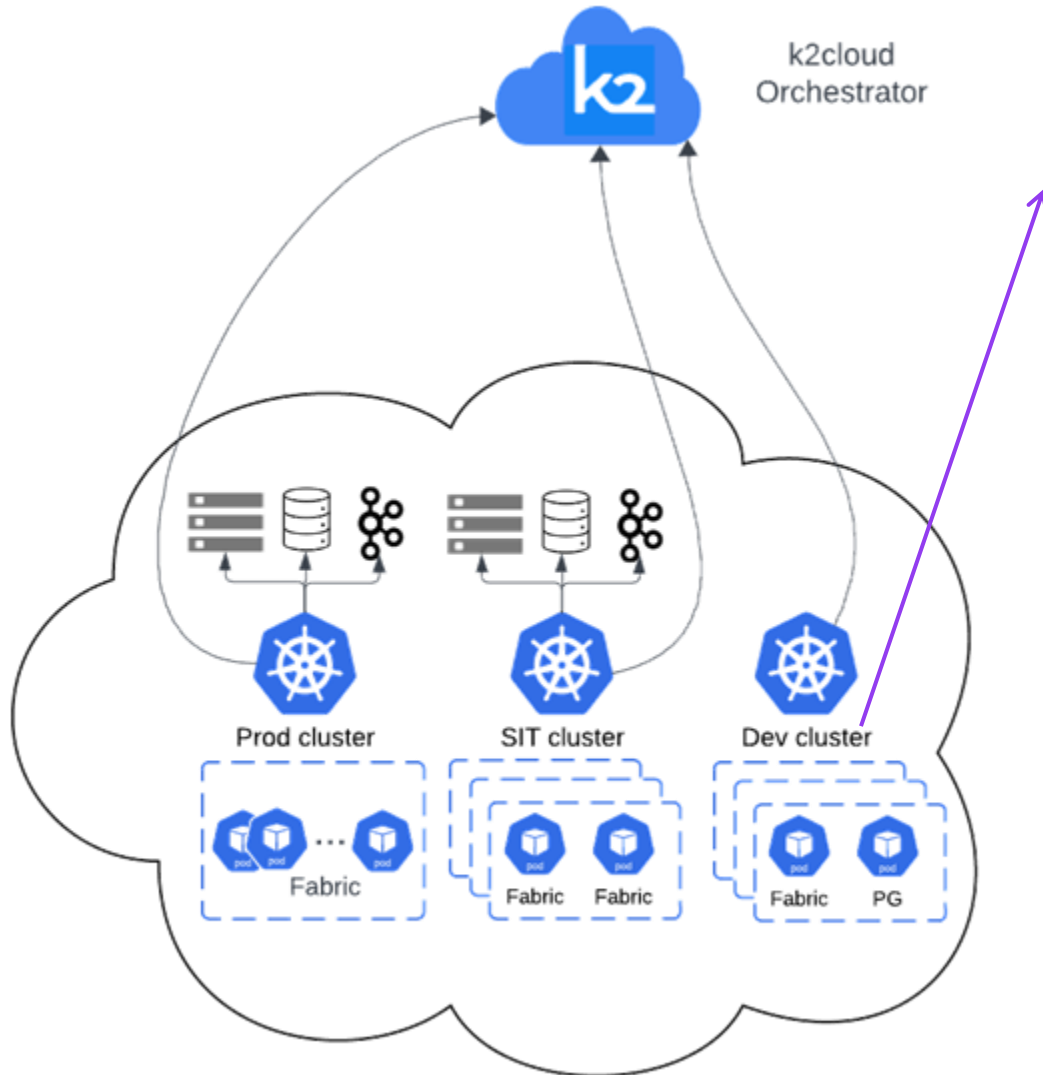
Quick Tour



# K2cloud Orchestrator

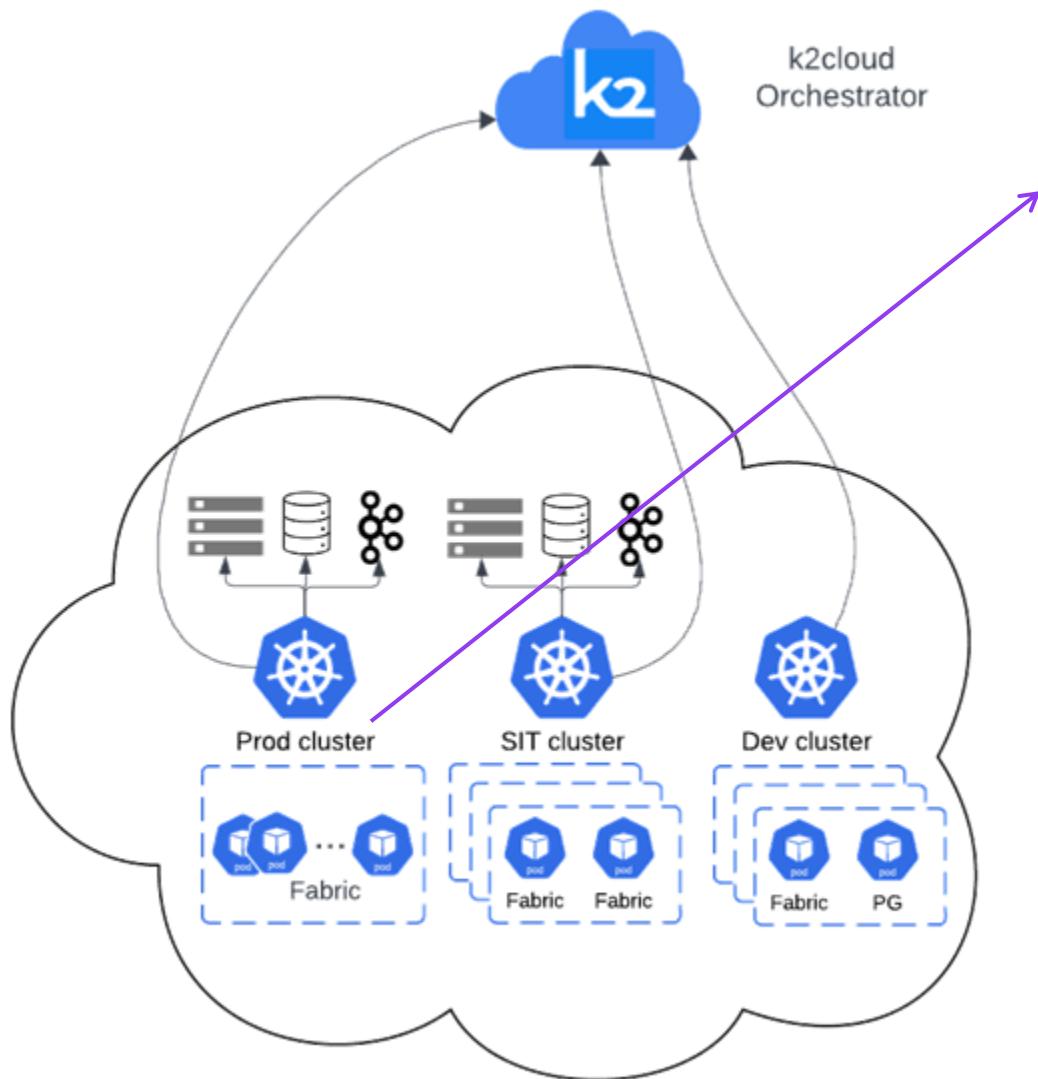


# K2cloud Fabric Web Studio





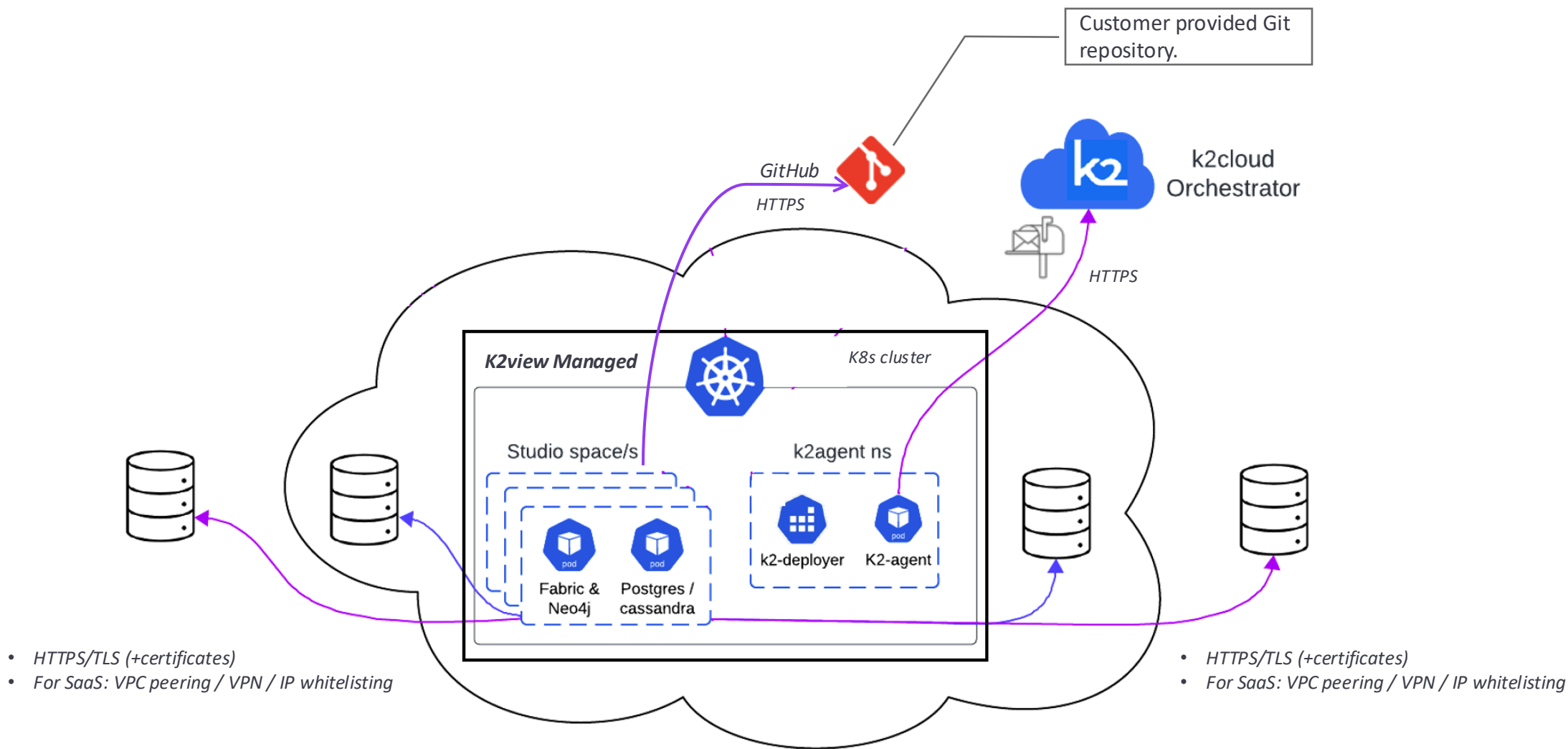
# K2cloud Space Administration



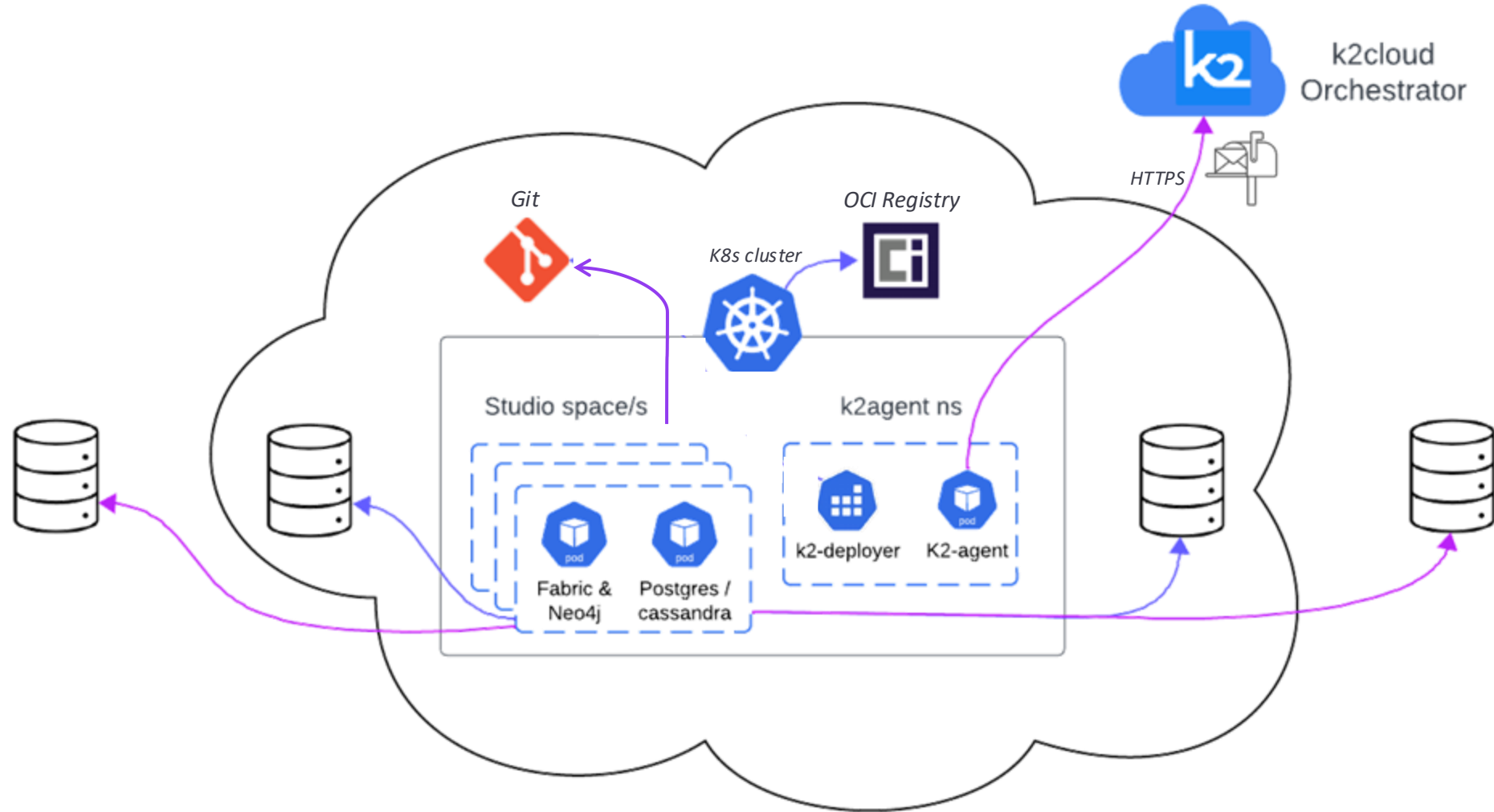
The screenshot shows the K2cloud admin interface. The browser address bar displays 'lc360-k2view.k2rnd-4.cloud.k2view.com/app/admin/interfaces'. The navigation bar includes 'k2admin' and tabs for 'Processes', 'Objects', 'Security', 'Commands', 'Terminal', and 'Configuration'. The 'Interfaces' tab is selected. The breadcrumb trail shows 'Admin > Interfaces'. The main heading is 'Interfaces' with a '\_dev' dropdown. Below is a table of interfaces.

	INTERFACE	TYPE	STATUS
...	ASSET_DB	SQLite (Db)	OK
...	BILLING_DB	SQLite (Db)	OK
...	CRM_DB	SQLite (Db)	OK
...	localFileSystem	LocalFileSystem	OK
...	projectHome	LocalFileSystem	OK
...	share	LocalFileSystem	OK
...	workspace	LocalFileSystem	OK

# Offered as a SaaS Managed Service



# Deployed as a Customer Self-Managed Service





**k2view**

**Thank you**